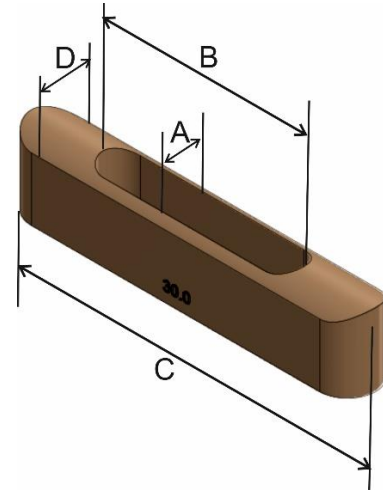


**1. Part Number:** 1290W (All Sizes)

**2. Photograph:**



### 3. Product Information:

**Description:** Inserts for Multi Thief Samplers

**Material of Construction:** 316L stainless steel

**Finish:** Better than 0.8 microns Ra

**Dimensions:**

Part No.	Nominal Volume	Slot Width (A)	Slot Length (B)	Overall Length (C)	Overall Width (D)	Nominal Weight
1290W-05	5ml	15mm	20mm	137mm	22mm	605g
1290W-10	10ml	15mm	30mm	137mm	22mm	565g
1290W-20	20ml	15mm	55mm	137mm	22mm	485g
1290W-25	25ml	15mm	65mm	137mm	22mm	450g
1290W-30	30ml	15mm	80mm	137mm	22mm	410g
1290W-40	40ml	15mm	105mm	137mm	22mm	330g
1290W-50	50ml	20mm	110mm	137mm	22mm	245g
1290W-60	60ml	20mm	120mm	137mm	22mm	220g
1290W-00	Blank	n/a	n/a	137mm	22mm	650g

**BSE/TSE statement:** All polishing compounds used in the manufacture of this product are of vegetable origin

**Recommended Storage Conditions:** Dry and ambient temperature

### 4. Approval:

Signed:



**Name:** Kuldeep Flora

**Position:** Quality Manager

**Date:** 14-Nov-24