

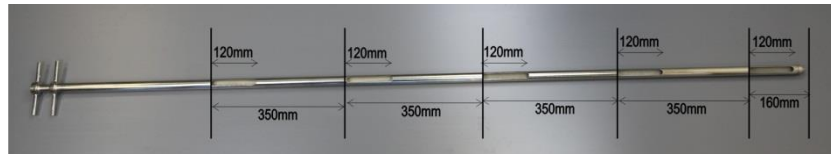
1. Part Number: 1210A-2000

2. Photo:



3. Product Information:

Description	Slot Sampler 2000mm
Materials:	316L stainless steel
External Polish:	Better than 0.8 microns Ra
Internal Polish:	None
Outer Diameter of Outer Tube:	25mm
Inner Diameter of Inner Tube:	17mm
Overall Length:	2030mm
Slot Length:	120mm
Slot Width:	15mm
Number of Slots	5
Slot Positions:	



Nominal Weight of Sampler:	3.7kg
BSE/TSE statement:	All polishing compounds used in the manufacture of this sampler are free of animal products
Recommended Storage Conditions:	Dry and ambient temperature

4. Approval:

Signed:



Name: Kuldeep Flora
Position: Quality Manager
Date: 13-Nov-24